

When laborers in Essex question me about a brand new **Boiler Installation Essex** quote, the boiler itself is simply 0.5 the conversation. The other 0.5 is the dull bit that truly decides no matter if the formula runs smoothly for years: flue routing, pipework format, condensate managing, and the way the whole lot has to work in factual houses with authentic constraints.

I've been on call outs the place the boiler fired flawlessly on attempt day, then later a small mistake within the **flue** attitude or condensate route turned into ordinary faults. The visitor proposal it changed into the boiler. It wasn't. It used to be the route, the lure, and the means the waste ran. That is why, after I plan a task correctly, I spend time on the flue and pipework prior to we ever dangle the recent unit.

This e-book is the same manner I provide an explanation for it to house owners, landlords, and small commercial enterprise householders. It is sensible, it's miles sincere about exchange-offs, and it helps you ask larger questions before the first hollow is drilled.

First, decide the flue model that suits the property

A lot depends on the prevailing setup. If there's already a compliant flue role, the process will also be honest. If you're altering boiler sort, upgrading situation, or transferring from a universal association to a room-sealed process, then the planning stage will get more exceptional.

In Essex homes, you'll see 3 trouble-free eventualities:

- wherein the flue exits by means of an external wall at a effortless peak, aas a rule for a room-sealed balanced flue system
- the place the flue route has to circumvent stumbling blocks like gutters, downpipes, lintels, and awkward inner corners
- wherein area constraints imply the pipework and condensate drain would be greater tough than the boiler substitute itself

The right flue option also affects service get right of entry to. A flue that is tidy from outdoors can nevertheless be difficult inner if it forces you into long inner runs or cramped elbows. I've noticeable installations the place the outside seem turned into neat, but the inner bends made the condensate behave badly in colder months.

If you're arranging **Boiler Service Essex** or **Boiler Repair Essex** work on a approach it really is nearing the end of its existence, that's a effective moment to invite: is the modern-day flue setup nevertheless doing the task, or are you simply changing a boiler into an existing hardship?

Flue route making plans: the data that evade headaches

The flue seriously isn't only a pipe to aspect out of the wall. It has to work with air rigidity modifications, condensate behaviour, and wonderful termination clearances. When the flue is planned right, the boiler plays quietly, effectively, and constantly. When it's miles deliberate badly, faults can glance random: cycling, errors codes, ignition themes, or overall performance drops that only manifest when the wind picks up.

Here's what I check out in the course of a making plans stopover at.

External termination location and clearances

Termination aspects want to sit down the place they won't be littered with triumphing winds, where flue gases won't be drawn returned into the construction, and wherein they gained't create a nuisance. In terraced streets round parts of Essex, you'll come to be with flue exits close to neighbours' walls, shared limitations, or constrained lawn layouts. A little adjustment in wherein the flue exits can make a sizable difference to regardless of whether it remains compliant and drawback-unfastened.

On detached buildings, the issue is more often than not no longer neighbour proximity, it's miles surfaces and obstacles. If a flue exits underneath a soffit, or near a gutter line, you might get condensate staining or disturbance of airflow styles. It is additionally diffused till you see it over just a few months of climate.

Avoiding long runs and extreme bends

Every bend and section provides resistance. That can affect how the machine manages combustion air and exhaust gases. If it's essential path round joists, cabinet corners, or downpipe positions, that is tempting to "simply make it have compatibility." With flues, making it healthy is oftentimes precisely how other people finally end up calling for **Gas Safety Check Essex** ahead of expected.

In a realistic sense, for those who discover your self forcing the direction with distinct angled joints, that may be a signal you should revisit the planned boiler position or reconsider the direction. Better to go the boiler a bit than to combat the flue course.

The fall and the condensate reality

Condensate is in which conception meets the displaying cupboard. The combustion task produces condensate, and it has to empty properly. That ability the condensate pipework wants the true route, fall, and insurance plan from freezing the place desirable. If the condensate line runs by way of a space that will get icy, or if the course dips then rises, you possibly can come to be with intermittent blockage or gradual drainage.

I mostly see condensate treated like an afterthought, "we'll model that within the second." That's how you become with go [Air Conditioning Essex](#) back visits. A effectively-planned condensate drain is element of the flue method.

Weather, wind, and native prerequisites in Essex

Essex has its percentage of cold snaps, and on exposed aspects of houses, flue overall performance shall be extra delicate. Wind patterns subject, above all for quick outside runs. If you could have ever watched smoke or steam behave another way depending on wherein the breeze comes from, this is the vibe here. Flue termination areas may want to account for neighborhood publicity.

If you're in a semi-uncovered place with gardens and trees nearby, possible nevertheless have subject matters when the wind turns. The flue will have to be secure in the different situations, no longer simply on a delicate day.

Pipework making plans: where alleviation and reliability are decided

A new boiler can ship brilliant functionality, but it shouldn't restoration deficient pipework design. For the relatives, the facts is in stream temperature steadiness, reaction time to heating call for, and how regular the new water stays.

A lot of clients think pipework is simplest about connecting the boiler to the present components. In truth, the structure makes a decision how the manner balances, how water moves due to radiators and taps, and whether or not you get troubles like noisy pumps, air locks, or choppy heating.

Choosing the boiler position

The boiler location impacts the whole lot downstream. Wall capability, entry for servicing, and the shortest path to fuel, water, and condensate all rely.

If the boiler is placed in a cupboard, you would have to also have faith in air flow and riskless entry. If it can be in a storage or application room, you have got to factor in ambient cold and regardless of whether the condensate course will freeze.

I've hooked up boilers in places the place the pipework looked wonderful on paper, then came again in iciness considering the fact that condensate didn't just like the chilly corner it had to traverse. The fix turned into no longer "replace the boiler." The restoration become reroute condensate with more desirable maintenance.

Heating and scorching water movement: balancing and control

Pipework layout affects how the boiler responds to calls for warmth. If the system has lengthy uninsulated runs to radiators, the return temperature behaviour ameliorations. Controls will nevertheless characteristic, but convenience %!%df50d941-1/3-4bf0-90d6-bc3a118ece99%%!%% really feel much less soft, pretty when you've got good keep an eye on demands.

If you're adding a new quarter, replacing older **Plumbing Essex** runs, or upgrading pipework for the time of set up, it's really worth taking time at the hydraulic side. That incorporates checking current layouts and regardless of whether any sections are undersized or configured in a way that motives terrible movement.

System cleanliness and why it concerns for the pipework

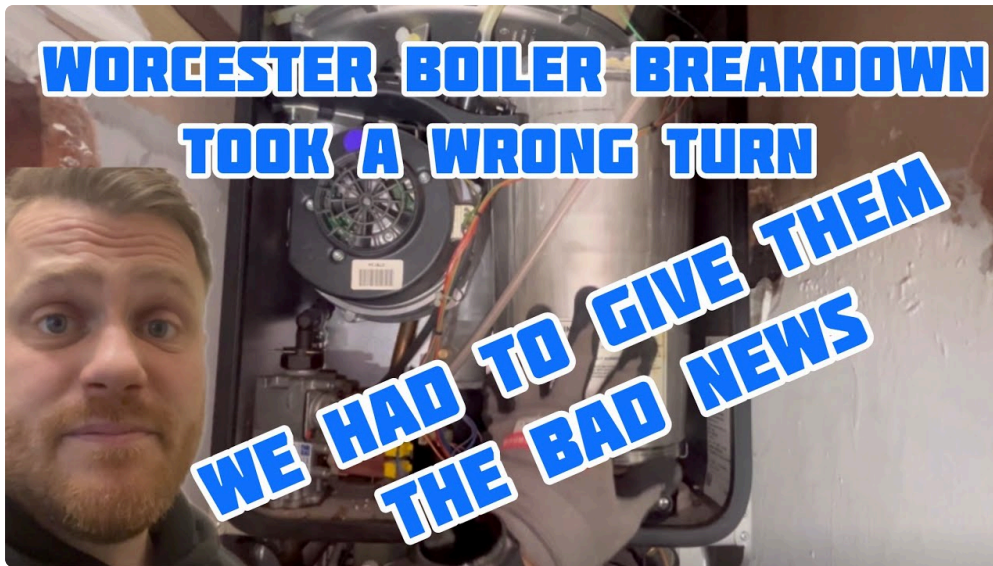
One of the supreme selections you're able to make all the way through a **Boiler Installation Essex** is to cope with formula cleanliness. Sludge and particles can assemble in radiators, in boiler waterways, and inside the smallest passages in which circulate matters most. This impacts warmth transfer and will increase wear.



This is wherein **Power Flush Essex** is also a serious attention. If you've gotten a process with discoloured radiator bottoms, routine cold spots, or seen particles inside the sight glass (the place equipped), flushing

can make the distinction among a boiler that runs nicely and a boiler that struggles.

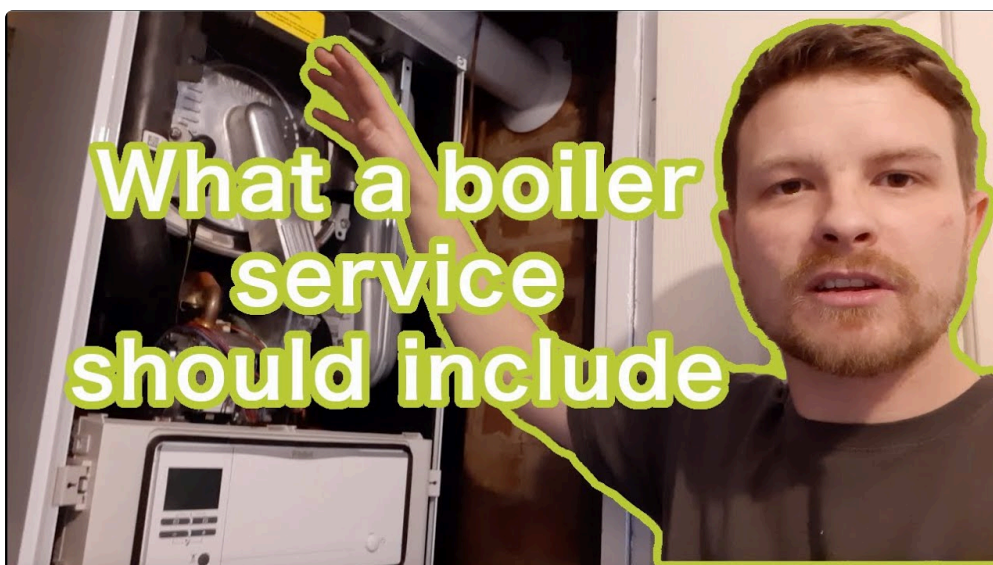
Now, now not each and every procedure desires a full flush, but many do. If you might be transferring from one boiler to an extra in a long-founded estate, I most of the time propose discussing it rather than hoping cleanliness will likely be "shut adequate."



Gas connection planning: safe practices first, yet additionally lifelike routing

Gas pipe routing is not glamorous, however it should be most excellent, secure, and achievable long time. During deploy planning, the gas source route needs to align with equipment positions and avert needless lengths in which manageable.

If you might be changing an older boiler with a more moderen one, the gas connection measurement and situation %!%df50d941-0.33-4bf0-90d6-bc3a118ece99%!!% need adjustment. If you are adding a boiler in a brand new region, or in which the present run has no longer been touched for years, you wish a actual check of the complete direction.



This is one of those moments where I continually remind customers: the process just isn't executed till every little thing passes the necessary exams. For any individual asking about compliance, a **Gas safeguard**

certificates Essex is a key section of the job. And if you are comparing features or paintings background, it topics that the cert reflects the put in approach thoroughly.

Condensate discharge: the area that demands true judgement

Condensate is easy whilst the drain path is simple. It becomes a making plans problem while the boiler is established additional from precise drainage issues, or where pipe runs have to cross bloodless locations.

I compare these points:

- the nearest compliant disposal course, mainly into a ideal inside waste manner or a committed condensate line as required by means of design
- how the condensate pipe is supported to guard fall and stop sagging over time
- where the pipe passes thru or near unheated spaces
- even if an external run could freeze and whether or not it necessities protection

If you might have had prior disorders with leaks or blockages, I treat the condensate route as a root reason candidate, now not a secondary aspect. A "small leak" close the boiler can was a much bigger one if the course is invariably stressed or if the catch configuration changed into in no way true.

This is why I do no longer rush the pipework planning, although the activity is "just swapping the boiler."

When the boiler place ameliorations: making plans for knock-on effects

Sometimes the targeted visitor needs the boiler moved, not with no trouble replaced. That is affordable, quite while renovating, making improvements to garage, or changing how the estate is used.

But after you circulate the boiler, you quite often alternate the pipework route for:

- sizzling water pass and go back to the cylinder (you probably have one)
- heating flow and return to radiators
- condensate discharge
- fuel supply
- flue route

Each exchange can impression the others. For illustration, should you circulate the boiler to make the flue easier externally, you could create an extended condensate path internally. If you transfer it to shorten pipework, you could possibly pressure the flue to skip close to a window, a gutter, or a boundary point that desires careful positioning.

A exact installer will express you the change-offs and assistance you in deciding stylish on what may well be made professional, not what's simplest for the installer at the day.

Multi-property and business setups in Essex

Essex just isn't just household. Some of the same planning ideas follow to small trade houses, landlord portfolios, and commercial items, but the sensible constraints is also various.

If you run a company and you depend upon hot water and heating, downtime is high priced. You also have a tendency to have specific patterns of call for. For instance, a hectic outlet may see faster sizzling water draws, when heating could run in bursts in place of step by step.

In kitchens and foodstuff prep regions, gasoline defense and desirable air flow subject even greater. I'm aware that worker's normally confer with expert setups like **Burger van gas Essex** whilst speaking about gasoline presents for cell catering. The lesson is the similar: riskless routing, appropriate connections, and just right checks matter considering the fact that the surroundings is dynamic, no longer static like a residence airing cabinet.

For enterprises, it's value asking how the installer plans for checking out, certification, and handover timing so your premises isn't left in limbo.

Flue and pipework error that present up later

Many complications have a "not on time monitor." Everything passes the instant commissioning assessments, after which months later the formulation starts offevolved performing up. The patron assumes the boiler has failed.

From what I've observed, those are the everyday patterns:

- condensate drainage troubles in chilly snaps on account that the direction was made "shorter" other than exact drained
- flue termination performance matters while wind shifts and the opening is just too practically a boundary feature
- negative pipework stream premier to uneven heating, principally wherein old valves or stability issues have been on no account corrected
- components cleanliness disorders, where sludge keeps to sort since the deploy did no longer tackle debris risk

This is likewise why clients typically want ongoing help with **Boiler Repair Essex** or **Gas Fire Service Essex** when installations aren't planned with sturdiness in brain. A boiler is routinely the perfect area. Pipework and flue making plans are the sturdiness.

LPG, conversions, and what variations inside the planning

Some houses in Essex are on LPG, and a few are converting. **LPG Essex** setups can complicate assumptions approximately aspects and performance. If you might be changing a approach, the flue and pipework planning %!%df50d941-0.33-4bf0-90d6-bc3a118ece99%!!% need to be revisited alongside the boiler determination.

The substantial snapshot is straightforward: conversion is simply not simply swapping portions. It influences how the formula behaves and what the installer necessities to make certain at commissioning.

If you might be puzzling over conversion, ask the installer to provide an explanation for what's going to be modified and what will be verified. If you're in doubt, request small print of the checks they will perform and the way they are going to ensure trustworthy operation after the conversion.

How installers have to be in contact flue and pipework planning

A proper deploy conversation feels clean and grounded. You have to be capable of ask, "Where does the flue pass and why there?" and obtain a reasoned resolution, now not a quickly shrug.

I like installers who clarify:

- why the boiler is located in which it is
- how the flue course avoids challenging obstructions
- the place the condensate discharge will land and how that is included from freezing
- how the pipework will probably be laid out for good circulation
- what is going to be carried out to safeguard the approach from particles (such as even if **Power Flush Essex** is suggested)

If you're also dealing with different providers inside the assets, one can have diverse trades fascinated. People sometimes combine heating enhancements with air flow improvements, and from time to time with **Aircon Essex** or **Air Conditioning Essex** work in refurb initiatives. In these situations, the construction services and products can begin to compete for house. That makes clear making plans and coordination even greater priceless.

Questions to ask earlier than the primary drilling starts

If you wish to get a perfect feel of whether an install plan is forged, ask those within the most simple phrases one can. You're aiming for readability, not technical theatre.

A quick, superb set of questions

1. Where precisely will the flue terminate, and what does that position preclude on the property?
2. How will the condensate discharge be routed, and what happens in freezing weather?
3. Will you investigate system cleanliness, and is **Power Flush Essex** considered necessary in my case?
4. If you desire to reroute pipework, what adjustments will that create for heating and warm water performance?
5. What checks and documentation will you offer, consisting of a **Gas protection certificates Essex** in which required?

A fantastic installer will resolution with out getting protective. If the answers are imprecise or brushed aside, that is a sign to sluggish down.

The dating among flue planning and ongoing service

Even while an setting up is highest on day one, long run provider things. Flue formula must be reachable for inspection and trustworthy cleaning where suitable. Pipework must always be established so isolation elements are available and so later ingredients substitute does now not require substantive rework.

This is wherein **Boiler Service Essex** is available in. Maintenance is not approximately ticking boxes, that's about keeping the components good. When flue and pipework are set up with realistic get right of entry to and relevant routing, servicing is powerful and less disruptive.

For owners, the get advantages is sensible: fewer call outs, fewer repeating faults, and more predictable efficiency. For landlords and corporations, the merit is even clearer: less downtime and much less risk around compliance.

Planning for the "precise existence" variant of the job

A weblog submit can't walk by your hallway, see your joists, and measure the exterior wall thickness across the flue factor. That's what web page visits are for.

Still, when you take one thing from this article, permit it be this: flue and pipework planning is the distinction among a boiler that appears awesome at commissioning and a boiler that performs effectively as a result of Essex winters, due to windy days, and by some thing modifications your house throws at it.

Whether you're shopping for **Boiler Installation Essex**, planning **Boiler Repair Essex**, reserving **Gas Fire Installation Essex** or **Gas Cooker Installation Essex**, or holding up with **Gas Fire Service Essex** and **Gas safety certificates Essex** wants, the same idea holds. The procedure is purely as appropriate as the layout selections round it.

When the flue is routed thoughtfully, when condensate has a official route, and whilst pipework supports smooth circulation, you get relief that feels secure. It's now not glamorous. It's just what awesome engineering seems like in factual residences.