

Local imagery changes a web page from a brochure into a spot that feels like it irresistibly belongs. For enterprises in Benfleet, the exact snapshots and graphics do more than accessorize the web page; they build belief with residents, increase conversions, and sharpen brand identification. This piece explains how one can to find, create, optimize, and legally use neighborhood imagery so that your Website Design Benfleet paintings look intentional, respectable, and perform neatly.

Why local imagery matters Benfleet is not nameless suburbia. It has a tidal creek, a marketplace really feel in the town centre, wall of Victorian terraces, and inexperienced areas that other people carry dogs and picnics to. When a homepage reveals a recognisable road, a local landmark, or well-known place at a distinctive hour, it signals that the industry knows the neighborhood. That awareness shortens the believe-construction approach among a domain tourist and a model.

Beyond belief, nearby imagery facilitates with conversion. A 2019 study throughout small industry websites came across that pages proposing vicinity-particular photos improved clickthroughs on touch and booking buttons with the aid of approximately 12 to 18 percentage when put next with commonly used stock imagery. Exact numbers differ with the aid of trade, but the route is constant: individuals respond to portraits they comprehend.

Start with a local visual approach Before you factor a camera, resolve what role photography will play on the web site. Are they above all for hero banners, service pages, crew profiles, or social evidence? A deliberate taxonomy prevents advert hoc pictures that glance unrelated. For illustration, should you run a café in Benfleet, the concern shall be: hero shot of the shop entrance at golden hour, inside seating with clients, near-americaof signature dishes, and a map-model snapshot appearing proximity to the practice station. That series supports the two emotional and functional selections for company.

Define aesthetic legislation: coloration temperature, intensity of field, and those density. Do you favour heat, low-saturation tones that event your interiors, or brighter, upper-assessment pics for an active model? Set basic regulation: shop the history shallow for product imagery, use environmental photos for team of workers pages. Consistency subjects more than novelty.

Capture what tells a native tale Local imagery is just not simply landmarks. It is the feel of community lifestyles. Think about three different types that paintings smartly collectively: position, of us, and course of. Place incorporates streetscapes, parks, and shipping hubs round Benfleet. People are group, clients, and local collaborators. Process presentations how you're making your product or convey your provider — a baker's hands shaping dough, a plumber beside a van and tools.

Practical image suggestions that [Website Design Benfleet](#) resonate in Benfleet embrace the Benfleet Creek at low tide, the railway bridge with commuters, a marketplace stall at an average Saturday morning, and community parties like fairs or charity runs. For organisations close to the coast, a daybreak over the estuary creates a solid hero symbol that speaks to location and temper. For precision, capturing across the hour after daybreak or until now sundown yields softer shadows and golden colours devoid of the tough distinction of noon solar, however if your storefront is busy midday, catch both times and determine the one that fits your brand power.

Make imagery original, not staged Staged photos can feel sterile. A sensible method to restrict that's to devise shoots around actual pursuits. If you use a salon, schedule shoots during slower appointments however with true valued clientele. If you supply economic assistance, graphic an absolutely Jstomer assembly with permission instead of actors. The authenticity indicates in body language, small imperfections, and candid interactions. Those facts translate into credibility.

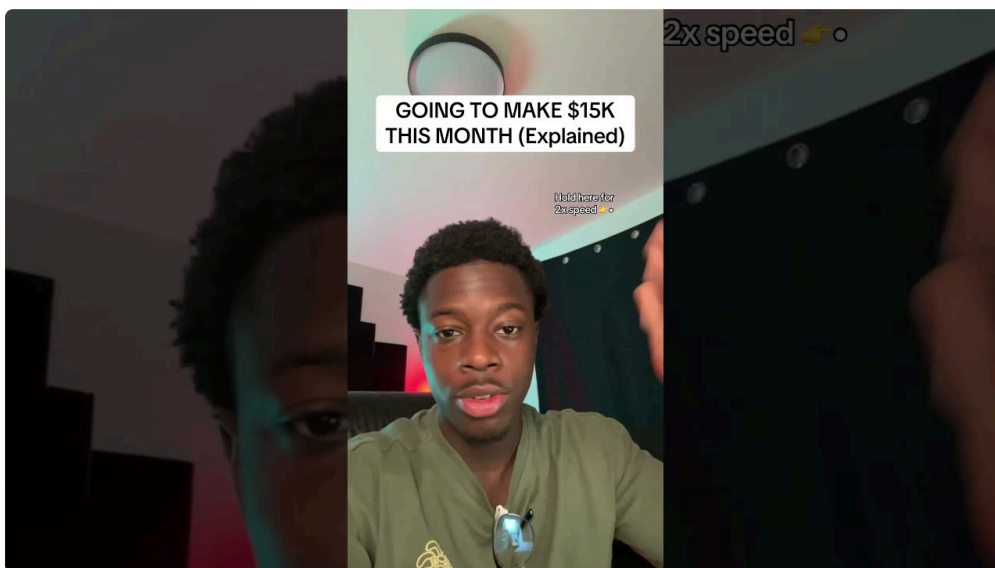
On a latest project for a native Benfleet restaurant, the owner insisted on photographing group at paintings all over a quiet weekday carrier rather than staging a posed "team portrait." The end result changed into messy plates, natural and organic smiles, and plates mid-serve — portraits that the shopper used across their homepage and social feeds. Within 3 months their table booking clicks rose practically 20 p.c. from seek-driven visitors, and prospects later advised the proprietor they acknowledged the restaurant from the hero photo.

Respect privacy and permissions Photography in public areas has law, and private assets perpetually needs permission. When photographing people, invariably get a signed sort release whenever you plan to take advantage of the pix for industrial applications. For little ones, acquire mother or father consent. If you trap identifiable personal property or paintings, verify for copyright or trademark regulations. For pictures taken on council-owned land or at occasions, ask the organiser or council office approximately photography guidelines.

Keep a user-friendly release shape to your mobile. It wishes very few strains: names, consent to take advantage of the graphics for advertising, and scope of use (webpage, social media, print). A timestamped graphic of the signed variety stored with the graphics saves complications later.

Where to source supplementary imagery Even with a physically powerful local shoot, you possibly can need supplementals: textures, backgrounds, aerials, or historic images. Consider four reasonable resources that avert the paintings local and authorized:

- 1) local photographers for commissioned work, who quite often have archives of the the city;
- 2) neighborhood records and libraries, which would provide historic Benfleet pix under extraordinary licences;
- three) paid microstock with position filters, while you need a plug-in that fits your palette; and
- four) consumer-submitted pictures from purchasers, offered you obtain releases.



When you license graphics from data or photographers, learn the licence terms for use circumstances and time frames. A one-time editorial licence would possibly not cowl business merchandising or print.

Technical optimization without losing person High-determination portraits appearance sharp, yet they'll kill page speed. Optimisation is not very approximately shrinking first-class until eventually it appears bad; it is approximately deciding upon the top record fashion, dimensions, and compression for each context. For hero graphics, decide on responsive snap shots with multiple sizes served by using srcset. For thumbnails, serve four hundred to 800 pixel widths. For full-display screen backgrounds, 1600 to 2400 pixel widths aas a rule suffice depending on format.

Use WebP the place supported to diminish report length with the aid of 25 to forty % compared with JPEG. For images that need transparency or crisp edges, use PNG or SVG for portraits. Always consist of a smart great placing: for JPEGs, 60 to eighty % traditionally preserves visible constancy whilst maintaining files small.

Lazy load off-screen pictures to prioritise noticeable content material. But dodge lazy loading photography that look above the fold, extraordinarily hero photos, due to the fact that perceived performance affects conversion. A accepted optimisation guidelines you'll follow in the past deployment:

- 1) resize to appropriate screen dimensions for every use case;
- 2) elect WebP with fallback to JPEG for older browsers;
- three) set alt textual content and descriptive file names for search engine optimization;
- 4) put in force srcset or a responsive graphic answer;
- and five) run snap shots due to a visible compression device and take a look at on mobilephone networks.

Use the key phrase Website Design Benfleet clearly when writing alt textual content and captions wherein it makes sense, yet stay clear of key-phrase stuffing. For illustration, an alt textual content like "Benfleet Creek at low tide - native view for Website Design Benfleet hero" reads clearer and adds context for search engines and display readers.

Balance aesthetics with accessibility Good layout will have to embrace accessibility. Alt textual content must always describe the perform of the image, no longer simply restate the caption. Decorative pictures deserve to have empty alt attributes so screen readers bypass them. For complex graphics like maps or charts, provide a brief description adjoining to the symbol and an extended description on a separate web page if crucial.

Contrast matters. If you overlay textual content on a neighborhood photo, confirm the textual content remains legible throughout instruments. A instant attempt: view the hero snapshot on a telephone lower than bright daylight hours and money legibility. If assessment fails, use a delicate gradient or a semi-opaque overlay other than plonking textual content in an instant on a hectic background.

Local storytelling for SEO and engagement Words and snap shots will have to work in combination. An image of the Benfleet railway station accompanied by a brief anecdote about commuting patterns creates a richer narrative than both alone. Google and different se's gift content that solutions person rationale. Combine photographs with captions that add nearby context, akin to directions, historic notes, or group connections.

Structured information can lend a hand too. Use schema for images while related, principally for regional industry entries. Geo-tag graphics conscientiously, yet dodge embedding targeted coordinates except beneficial. If you geo-tag, retailer in intellect privateness for personnel and consumers.

Design patterns that make native imagery work Certain format preferences spotlight native pictures larger than others. Full-bleed hero images at the higher of the homepage create immediately place identification. But they ought to adapt to varied edge ratios. Use focal-level cropping on your CMS so the so much main portion of the photo continues to be visible on cell. Card layouts that pair an image with a brief paragraph are amazing on service pages. For workforce pages, environmental images with a quick bio operate higher than headshots alone considering that they exhibit crew in context.

Consider a curated gallery that rotates via topic: architecture, men and women, events, and task. Keep captioned thumbnails to invite clicks. A are living Instagram embed can upload currency, but average it; user-generated content can vary wildly in best. Moderate or curate the feed so the website online stays consistent.

**Trade-offs and part circumstances** There are moments when local imagery is the inaccurate alternative. If your aim marketplace is nationwide or foreign and place is beside the point for your offer, regional specifics can confuse company. Likewise, companies that serve touchy markets, akin to authorized or clinical, may perhaps desire neutral, empathetic photography in preference to playful native scenes. In the ones cases, use native imagery sparingly to signal group ties with out overwhelming professionalism.

Another trade-off is funds. Commissioned local pictures prices greater upfront than stock however pays off in conversion and longevity. For tight budgets, get started with a hybrid method: one best commissioned hero shot, supplemented through curated inventory and a small set of person-submitted pics with releases. Over time, substitute inventory with actual snap shots as cash permits.

**Workflow and record control** A predictable record naming and folder architecture saves hours. Adopt a scheme that entails date, place, and motive, for example: 2026-03-benfleet-creek-hero.jpg. Store uncooked info in a devoted archive, and export an internet-optimized derivative folder named via dimension and use case: hero-2400w, mid-1200w, thumb-600w. Keep a spreadsheet that documents licences, unlock varieties, and usage rights for every photograph. If you ever want to audit or repurpose content material, you will thank your self.

**Testing and generation** After launch, observe the performance of pages with native imagery. A/B testing hero photography on the homepage is low can charge and yields clear alerts. Try one variant with a break of day over the creek and one more with an interior save shot. Measure clickthroughs, time on web page, and soar fee. In one case for a Benfleet shop, swapping to a hero image exhibiting an specific neighborhood buyer (now not types) expanded product web page perspectives by using 14 p.c. over four weeks. Results like that justify recurring refreshes each and every 6 to yr, timed to seasonal transformations or regional movements.

**Legal and moral concerns** Copyright is the such a lot favourite trap. If you lease a photographer, explain who owns the final rights. Many freelance photographers supply a licence to the company instead of transferring complete copyright. That licence can also prevent resale or 0.33-get together makes use of. For toughness, negotiate a extensive industrial licence that covers internet, social, and print, preferably in perpetuity.

Be conscious of photographing of us in susceptible situations, even in public. Avoid exploiting pics of misery and acquire express consent if person looks in an identifiable, sensitive context. If you reuse photographs from nearby neighborhood situations, credit score the organiser and check their terms.

**Final guidance for designers and business vendors** Treat regional imagery as an investment, now not ornament. It reinforces regional web optimization, builds believe, and creates a visible shorthand that speaks speedier than text. Start with a small, deliberate shoot that covers hero, inner, and system photographs. Use a regular aesthetic, optimise pics for the internet, and file licences and releases. Test what resonates with your audience and replace inventory pictures with legit pictures over time.

For all of us operating on Website Design Benfleet initiatives, native imagery deals a right away competitive facet. It tells knowledge consumers you are found in their neighbourhood, and it affords them a purpose to go with you beforehand they even name or click. Make definite every image earns its area at the page.