

A boiler breakdown infrequently proclaims itself in a dramatic way. Most of the time it starts with anything small and fairly nerve-racking, the variety of component you note at the same time as making tea or awaiting a shower that never really arrives. And then you definitely leap listening to various noises, seeing exclusive error codes, and getting that tight feeling that comes from wondering even if it's "just a minor fault" or a specific thing which can depart you with out heating for days.

The troublesome aspect is that the related symptom could have multiple motive. A boiler that "received't hearth" may be a gasoline limitation, an ignition hassle, a management challenge, or maybe a thing as mundane as low technique pressure. A boiler that quick cycles, fires then stops, shall be a circulation complication, a sensor fault, or an overzealous thermostat. The strong news is that many breakdown warning signs observe patterns, and it is easy to slim them down speedily once you understand what to look for.

Below is a sensible support to the maximum customary boiler breakdown indications, what they on a regular basis imply, and what you must always do next. I'm going to center of attention on authentic-world observations I've noticed across boiler service visits and boiler restoration jobs, together with gas-linked procedures and LPG setups, wherein desirable.

First, be aware of what you're managing: heat and hot water symptoms

When a boiler behaves badly, it is helping to separate the issue into two questions:

1) Is it failing to warm radiators (space heating)? 2) Is it failing to warmness scorching water for taps and showers?

That separation probably tells you where to appear. A boiler can warmness radiators perfectly and refuse to produce hot water, in view that the fault lies in the diverter valve, the plate warmness exchanger, the cylinder sensor, or the hot water float course. Or it might probably make warm water but not warmth the condominium, which factors more closer to the heating controls, circulate, or a radiator stream challenge.

If your boiler is on a device with a separate cylinder and controls, or a combi boiler with a plate warmness exchanger, the warning signs will nonetheless map to extraordinary factors. The extra exactly you may describe what works and what doesn't, the sooner an honest engineer can get to the foundation trigger.

Symptom: no heating and no warm water

If the boiler is entirely dead, now not heating or making scorching water, you're typically taking a look at one in all a handful of categories: strength, fuel give, defense reduce-offs, or a keep watch over failure.

Common factual-existence examples contain:

- The boiler presentations no signs and symptoms of life, yet other family unit electrics work. That will probably be as common as a tripped fused spur or a boiler isolator swap became off at some stage in renovation. Less typically, it's a failed PCB.
- The boiler tries ignition yet doesn't continue to be lit. This can element closer to ignition electrode troubles, gasoline valve troubles, infected condensate (for condensing instruments), or a gasoline safety appropriate interruption.
- The boiler lighting for a second and shuts down sometimes. That issues toward either a detection hardship (flame sensing) or a safeguard or rigidity concern.

You could also see protection-linked shutdowns in which the formula trips because of the overheat, blocked flue, or combustion merchandise no longer being expelled properly. If the flue is affected, you may want to treat it significantly. Even the place it "seems high quality" visually, flue fuel topics can cause lockouts and security behaviour.

Because this symptom spans diverse factors, the such a lot efficient first step is checking what the boiler is telling you. Error codes, flashing lighting, and any messages at the monitor are not ornamental. They're the boiler's try at narrowing the fault all the way down to a circuit or security circumstance.

Symptom: low tension or "strain maintains shedding"

If your drive gauge sits low, or it drops over the years, your boiler also can nonetheless warm typically, then fail whilst the formulation can't hold flow.

Low boiler power is one of several most favourite call-outs because it's now not forever a dramatic fault. A gradual leak at a joint, a defective radiator valve, a drip at an appliance, or corrosion in a pipe run can all bleed components water rigidity over days or even weeks. After a appropriate-up, it might probably behave for a while, then fail back.

For clients, the average signals are:

- Boiler starts off in general, then stops and reflects a low pressure caution or fault.
- Radiators may perhaps cool erratically. One upstairs zone may possibly believe high-quality when a different stays lukewarm.
- You may possibly hear air-connected noises like gurgling, distinctly after topping up.

A relevant issue is a failing growth vessel. In a sealed heating components, the growth vessel "breathes" because the water heats and cools. If it may possibly't take the pressure, the stress can climb too high or drop in odd styles. Either method, it's a mechanics-and-safety hindrance, not anything you may want to avoid resetting usually devoid of investigating.

Symptom: radiator heating disorders (chilly spots, weak warmth, or uneven warm temperature)

When radiators fail to warm competently, it's tempting accountable the thermostat and stream on. But in train, a radiator limitation pretty much comes all the way down to certainly one of three topics:

- glide and stream problems
- trapped air
- regulations or scale construct-up

If you've currently bled radiators and the formulation responds for an afternoon or two, the boiler itself will be advantageous and the air challenge probably power some place else. If you bleed again and again, that issues extra strongly to a leak letting air in. That can incorporate small leaks hidden in the back of boxing or less than flooring.

If radiators are cold at the bottoms or have one section radically colder than one more, you can actually be coping with sludge or scale within the equipment. This is in which a energy flush regularly enters the communication. A chronic flush isn't always anything you do casually, but inside the perfect case it could restore movement through dislodging debris in the pipework and radiators. It's additionally no longer risk-

loose. Older systems, marginal pipework, and positive fittings will probably be harassed by using aggressive cleansing. The desirable decision relies on formulation situation, age, and what the engineer unearths all over overview.

Symptom: boiler quick biking (fires, heats in brief, then stops)

Short cycling is whilst the boiler activates, runs for a quick duration, then turns off, in the main repeating in swift succession. You may just see short bursts of warmth, then no warm, and the boiler could believe louder as it "kicks" on lower back.

This can come about when:

- the boiler is sensing temperatures incorrectly
- the formula can't circulate water speedy satisfactory (pump, valve role, blockage, or air)
- the heat demand is volatile as a consequence of regulate or wiring issues

A uncomplicated true-world scenario: somebody turns on heating, the boiler fires, then the radiators do not respond promptly, and the boiler reaches a threshold temperature and shuts off. That can seem to be a "boiler fault", yet it's typically a device stream issue. It becomes a plumbing limitation as much as a boiler repair component.

If you also have an Air conditioning approach or Aircon attached to the same plant subject, that's price declaring to the engineer. It doesn't immediately result in boiler brief cycling, but it may complicate how calls for and zones are controlled, quite on multi-manner homes. It additionally changes what "accepted" appears like throughout the heating season.

Symptom: sizzling water runs cold, intermittent, or merely works on one setting

Hot water faults are some of the such a lot irritating breakdown indications considering that you could cross from "probably excellent" to "nothing" in minutes.

For combi boilers (and even a few procedure boilers feeding home sizzling water), intermittent hot water aas a rule suggests a drift path or sensor subject. If the boiler makes hot water at low flow but struggles at upper demand, which will factor to drift restriction or a warmness exchanger aspect.

If the boiler makes hot water but it's simplest tepid, you can see:

- a temperature sensor fault
- a plate warm exchanger scaling issue
- diverting valve sticking or failing to exchange properly
- restrictions inside the home warm water plumbing

In older residences, it's commonplace to discover ancient upkeep that were "smart enough" on the time however don't survive present day demand. A boiler upgrade or new boiler installation can generally reveal weaknesses in present pipework, circulate costs, or water good quality styles. That's not necessarily a fault with the boiler. It's about the whole setup doing its activity jointly.

Symptom: boiler not igniting, ignition clicking, or flame failure

One of the most natural distress calls is the boiler making an attempt ignition usually, many times with clicking sounds, then locking out. Flame failure can teach up as:

- the boiler makes an attempt to spark however not ever proves flame
- the boiler proves flame quickly then shuts down
- it locks out and requires handbook reset

The wide-spread suspects for ignition and flame proving incorporate ignition electrode disorders, infection on detection elements, misguided gasoline valve behaviour, or combustion air and flue difficulties. For fuel home equipment, a right kind Gas Safety Check matters here, since combustion pleasant and flue extraction are safety connected, no longer simply "efficiency" associated.

For buildings by way of LPG, the fuel give and regulator behaviour become even greater remarkable. LPG tactics can behave in a different way, quite if the tank is low, regulators are mismatched, or pipe runs are affected by outside circumstances. An engineer will account for this at some point of Gas safeguard certificates work and servicing.

Symptom: unusual noises (kettling, banging, whistling, gurgling)

Noises are in most cases the easiest clue to spot, however they're not at all times the least difficult to fix.

Kettling is a traditional condensing boiler grievance: a rumbling, boiling-in-a-pot sound, basically accompanied by decreased overall performance and routinely a fault code tied to overheating or flow. Kettling is usally associated with scale construct-up within heat exchangers or deficient movement.

Banging or knocking is also water hammer effortlessly, peculiarly if valves slam or if air is trapped. Persistent banging could also signal movement concerns, stuck valves, or pump complications.



Whistling or fan-relevant noises can every now and then be basic for particular ranges, but if the pitch variations abruptly or comes with lockouts, treat it as a diagnostic clue other than historical past noise.

Gurgling usally factors to air in the procedure. That can occur after topping up, yet if it maintains coming to come back, you probably have an air ingress path, basically a leak.

Symptom: boiler journeys breakers or exhibits normal lockouts

If the boiler journeys vigour or journeys the electric protection tool (like an RCD or breaker), that indicates an electrical fault, brief circuit, or moisture ingress. Those instances are totally different from "general boiler breakdown" signs and symptoms like stress drops, they usually may still be handled in moderation.

Frequent lockouts with brief periods may propose a sample similar to:

- flue issue inflicting combustion merchandise or blocked discharge
- temperature sensing faults
- gasoline provide stability issues
- condensate drainage troubles in chilly weather

Condensing boilers depend on acceptable condensate disposal. If the condensate pipe is blocked, frozen, or poorly established, the boiler can behave unpredictably. It would possibly retain seeking to hearth and then stop for safety motives.

Symptom: error codes which you stay resetting

Resetting a boiler can work quickly, however it's also a capture. I've noticeable families retailer resetting weekly as a result of the formulation clears the fault briefly, then fails once more. That technique turns a diagnosis into guesswork. It additionally increases the danger of repeated lockouts taking place earlier than any secure fix or inspection.

If you notice a repeating blunders, write down:

- the exact code
- how long it runs earlier than locking out
- whether or not it's heating, sizzling water, or both
- if you lately transformed something, like turning radiators to a new software, adjusting heating occasions, or applying the method all the way through a exceptionally bloodless spell

That info facilitates an engineer resolve no matter if they're wanting at a sensor, a combustion hassle, a diverter valve, or a thing like a pump move fault.

Symptom: smell of gas, soot marks, or yellow flames (treat as pressing)

If you notice a gas smell, soot streaking round the boiler or flue joints, or signs and symptoms of bad combustion reminiscent of power yellow flames, don't "track it for an afternoon." Treat it as an pressing protection scenario.

A boiler is a gasoline equipment, and gasoline concerns don't seem to be problems you troubleshoot with guesswork. The ultimate reaction is to isolate if recommended via the emergency training in your house, restrict growing sparks, ventilate if trustworthy, and call a certified reliable. A appropriate Gas defense certificates method and Gas Fire Service workouts exist for a cause, and protection assessments usually are not whatever thing to hold up.

Special case: fuel cookers, gas fires, and shared pipework symptoms

Sometimes the boiler breakdown signs you're experiencing aren't totally from the boiler. On multi-equipment installs, a power regulator replace or a pipework restriction can exhibit up as difficulties in more than one area.

If you actually have a Gas Cooker Installation or a Gas fire installed in the similar belongings, chances are you'll be aware that the cooker flame seems vulnerable, the gasoline fire struggles to ignite, or the trend of faults adjustments when appliances are became on.

That doesn't mean the boiler is pleasant. It capacity the gasoline offer and regulate instruct may want to be checked as a manner. A specialist Gas Safety Check can name even if the fault is equipment-specific or deliver-similar.

And in advertisement settings, really in which catering gadget is concerned, it gets even extra genuine. I've worked on web sites where a Burger van fuel setup, or different excessive-demand LPG preparations, created pressure behaviours that impacted other home equipment while demands replaced at once. Commercial installs desire cautious commissioning and good delivery administration, and that they're usually more delicate to alterations in regulator functionality and cylinder phases.

When to name for boiler carrier versus boiler repair

It's efficient to recognise the change among boiler provider and boiler restoration, because the symptom you describe needs to tournament the service stage.

Boiler service is habitual preservation, traditionally which include checks of combustion, safety contraptions, and key resources. Boiler fix is responding to a fault that already exists.

Still, the boundary blurs. If your boiler starts off showing symptoms like intermittent sizzling water, unique noises, or known lockouts, it's not "just service time." It's a fix state of affairs which may involve ingredients alternative, flushing, or controls diagnosis.

A smart way is to treat power signs and symptoms like a repair, even while you had been due a carrier. If the fault is attributable to a specific thing like particles in a heat exchanger, a provider gained't remedy it. In the supreme cases, the engineer can type the immediately challenge and additionally counsel regardless of whether a Power Flush or corrective preservation is extraordinary.

Could or not it's a plumbing aspect instead of a boiler limitation?

This is where home owners quite often get frustrated, due to the fact the boiler is the visible item and the plumbing runs are hidden. But many breakdown symptoms are brought on by the approach round the boiler.

Examples from the field:

- radiators that don't warmth by means of valve positions or blocked pipe runs
- air pockets launched via leaks
- pipework regulations that in the reduction of move thru home sizzling water
- condensate considerations with regards to drainage routing, falls, or blockages

If you've had up to date Plumbing paintings, distinctly nearby, it's well worth flagging. Even a able plumber can cause a trapped air pocket, a small leak, or a replace in drive balance that later reveals up as "boiler failure."

Similarly, if there has been a boiler setting up improve recently, it's price considering that no matter if the commissioning and settings had been done adequately to your technique volume, radiator layout, and sizzling water utilization trend. Boiler setting up matters are rare, yet once they manifest, the indications are very genuine.

Could it's an "installer settings" or control obstacle?

Modern boilers be counted seriously on controls, sensors, and settings. Sometimes the boiler isn't damaged, it's misconfigured.

If your boiler simplest misbehaves at designated instances of day, or purely whilst you operate explicit hot water styles, a keep watch over or scheduling subject is perhaps fascinated. For instance:

- heating occasions that conflict with time wanted for the boiler to stabilize
- a thermostat or programmer dilemma that causes call for swings
- sensor placement issues or misguided sensor readings

One of the greater subtle eventualities is a mismatch among procedure layout and how it's used. A domestic that runs very low-demand warm for lengthy classes may well event varied biking behaviours than one that probably heats for longer blocks. That's now not a "user error" such a lot as a reminder that boiler behaviour depends on call for styles.

Two swift checklists that store time should you call

When you contact a Gas Fire Service or Boiler Repair engineer, the fastest approach to get the suitable fix is to present transparent, constant expertise. Here's a short tick list one can use over the phone.

What to notice approximately the boiler breakdown symptom

- Which mode fails: heating, hot water, or both
- Any mistakes code displayed, and what the boiler does sooner than it locks out
- Whether the boiler force is low, emerging, or steady
- Any current modifications, like Plumbing work, radiators bled, or new fuel cooker use
- Any noises, smells, or visible soot round flue areas

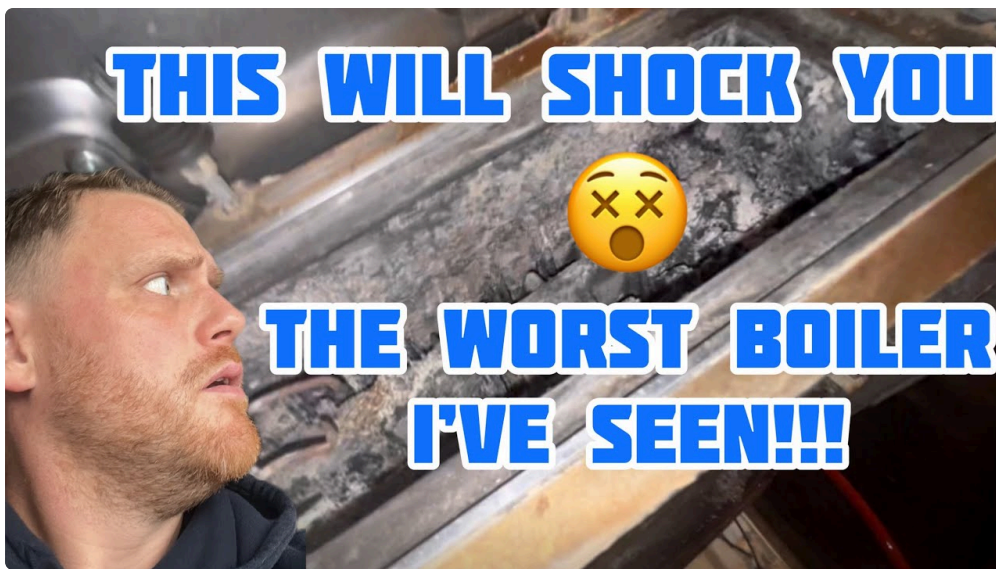
And if the engineer asks in your observations, this subsequent checklist facilitates you prevent guessing.

Questions to reply to earlier the engineer arrives

- How lengthy has the issue been going on, hours, days, or weeks
- Does it paintings once in a while and fail at different times
- Are radiators all equally affected, or simply detailed rooms
- Have you had to accurate up stress recently
- Is it an LPG setup, and if that's the case, has the tank level replaced recently

What that you could do competently when you wait (and what to forestall)

There are a number of risk-free actions that don't undermine diagnostics, but there also are actions which will make things worse.



If your boiler is low on pressure, following the boiler producer's directions for topping up (through the right kind filling loop system) could be applicable. However, if the strain drops to come back briskly, repeated topping up can mask the factual leak. In that case, the correct pass is to manage boiler carrier or boiler restore with stress loss in intellect.

If your boiler is in lockout, which you can be aware the code and the trend, after which anticipate a ideal analysis. Repeated manual resets, with out inspection, are infrequently efficient.

Avoid attempting to blank combustion or gasoline elements yourself. Also keep away from trying DIY fixes that have an effect on flue integrity, condensate pipe routing, or fuel valves. Those are security principal.

If you believe you studied an hindrance associated with Gas safe practices certificate requisites, akin to a boiler or fuel appliance that hasn't been [Gas Cooker Installation Essex](#) checked for a protracted period, it's fair to deal with a higher seek advice from as a compliance and repair alternative. A proper certified legitimate will perform the suitable exams and endorse what documentation is wanted for your home form.

How signs connect with certain faults, in simple language

Boiler breakdown warning signs can feel like a cloud of unrelated concerns. But they by and large hook up with a smaller set of motives.

- No heat or no scorching water can factor to ignition, potential, gasoline supply, or controls.
- Low power features to leaks, expansion vessel subject matters, or device steadiness.
- Uneven radiator heat primarily features to move trouble, air, or sludge.
- Short cycling most likely connects to circulate obstacles or sensor misreadings.
- Intermittent sizzling water can connect with diverting valves, warmth exchangers, and go with the flow sensing.
- Kettling and noises usally connect to scale build-up or stream restriction.
- Frequent lockouts connect with safety triggers, combustion or flue behaviour, or sensor logic.

The important section is that two boilers with the same symptom can have very completely different causes. That's why an efficient boiler provider engineer will ask questions, look at the development, take a look at the readings, and handiest then counsel the restoration, whether it's boiler restore, portion alternative, or a Power Flush.

The realistic "subsequent step" decision

If you're trying to opt what to do good now, use a clear-cut precedence rule: safeguard first, then trend awareness.

If you smell gas, see indicators of poor combustion, or have blocked flue suspicion, treat it as urgent. If your boiler is shutting down again and again with a clear mistakes code, take the trend significantly in spite of the fact that it "comes returned" after resets. If you might have low force, habitual air, or leaks, don't continue topping up ad infinitum.

For all the pieces else, it's mainly top to e-book a diagnosis. A efficient legitimate will tell you even if you're seeking at boiler service protection, a restore that shall be handled simply, or a device-level intervention like a Power Flush. And you probably have comparable home equipment, like Gas Fire Installation, Gas Cooker Installation, or any LPG feed for catering equipment, mention it. In the truly international, those main points most often shorten the activity by way of hours.

Boiler breakdown indicators is additionally defined, but they nevertheless require focus. The extra competently you describe what you're seeing and the greater you evade transitority resets devoid of inspection, the swifter you get lower back to respectable hot water and heating, the approach the method was once supposed to work.